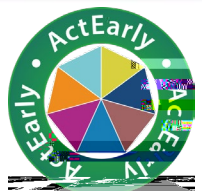
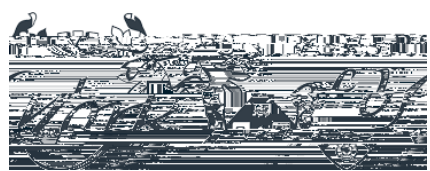




# Health justice partnerships in maternity and child health settings

Dr Sian Reece





# Health impacts of deprivation

---

Poor physical and mental health

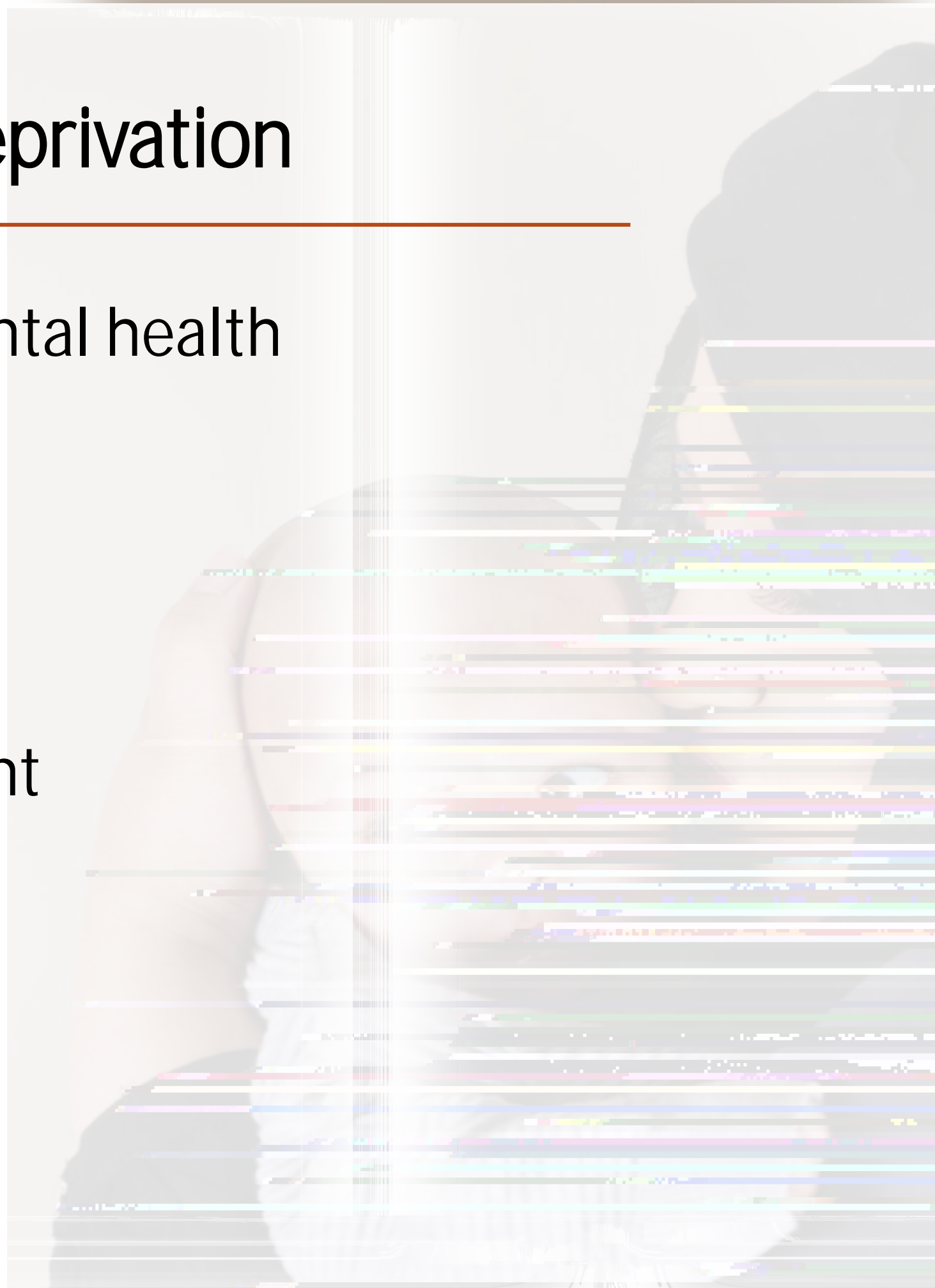
Child development

School readiness

Educational attainment

High risk behaviours

Youth crime



# Health impacts of deprivation

---

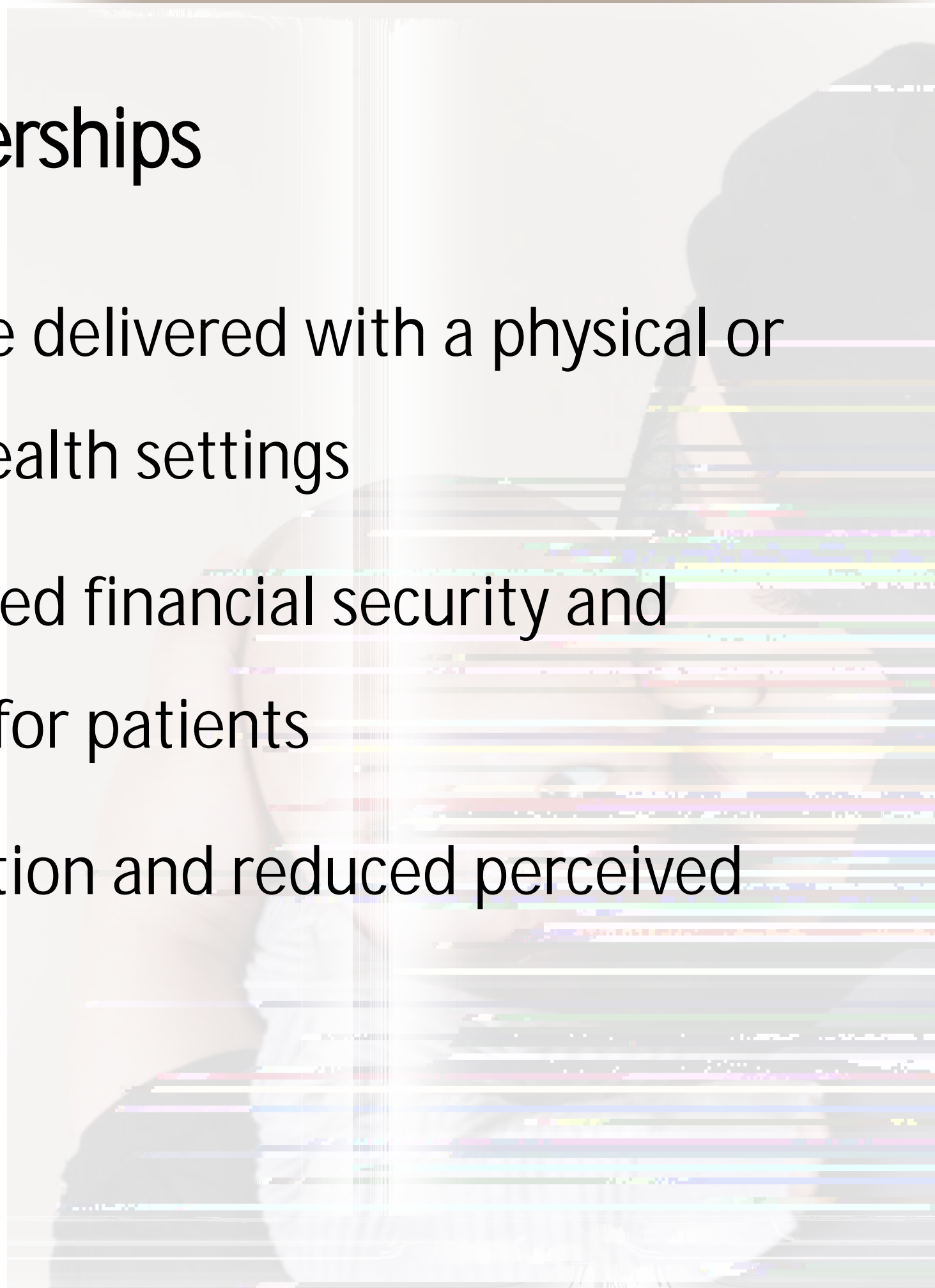


# Health justice partnerships

Welfare advice service delivered with a physical or functional link with health settings

Demonstrable improved financial security and health and wellbeing for patients

Improved job satisfaction and reduced perceived



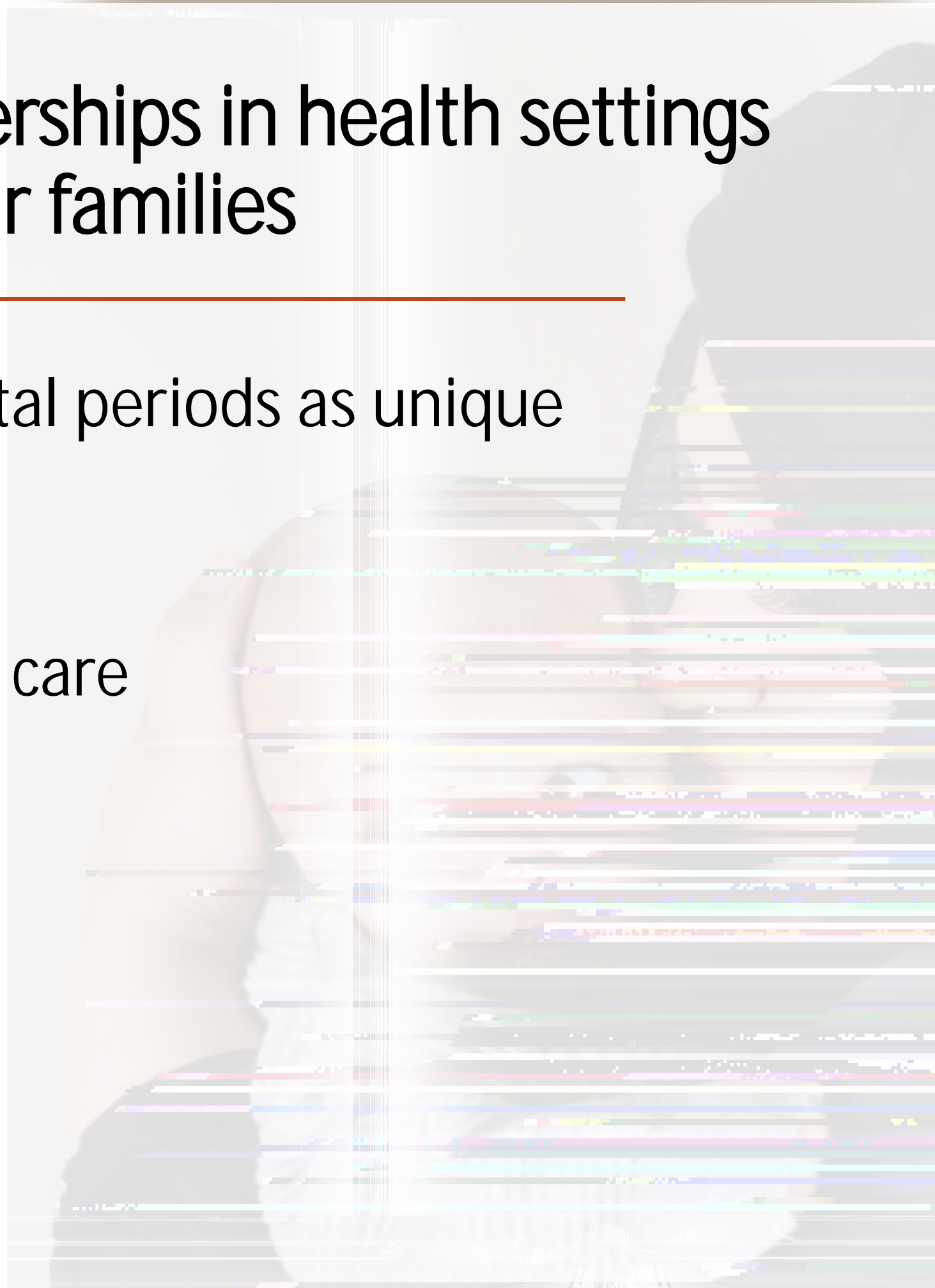


# Health justice partnerships in health settings for mothers and their families

---

Antenatal and postnatal periods as unique teachable moments

Universal provision of care



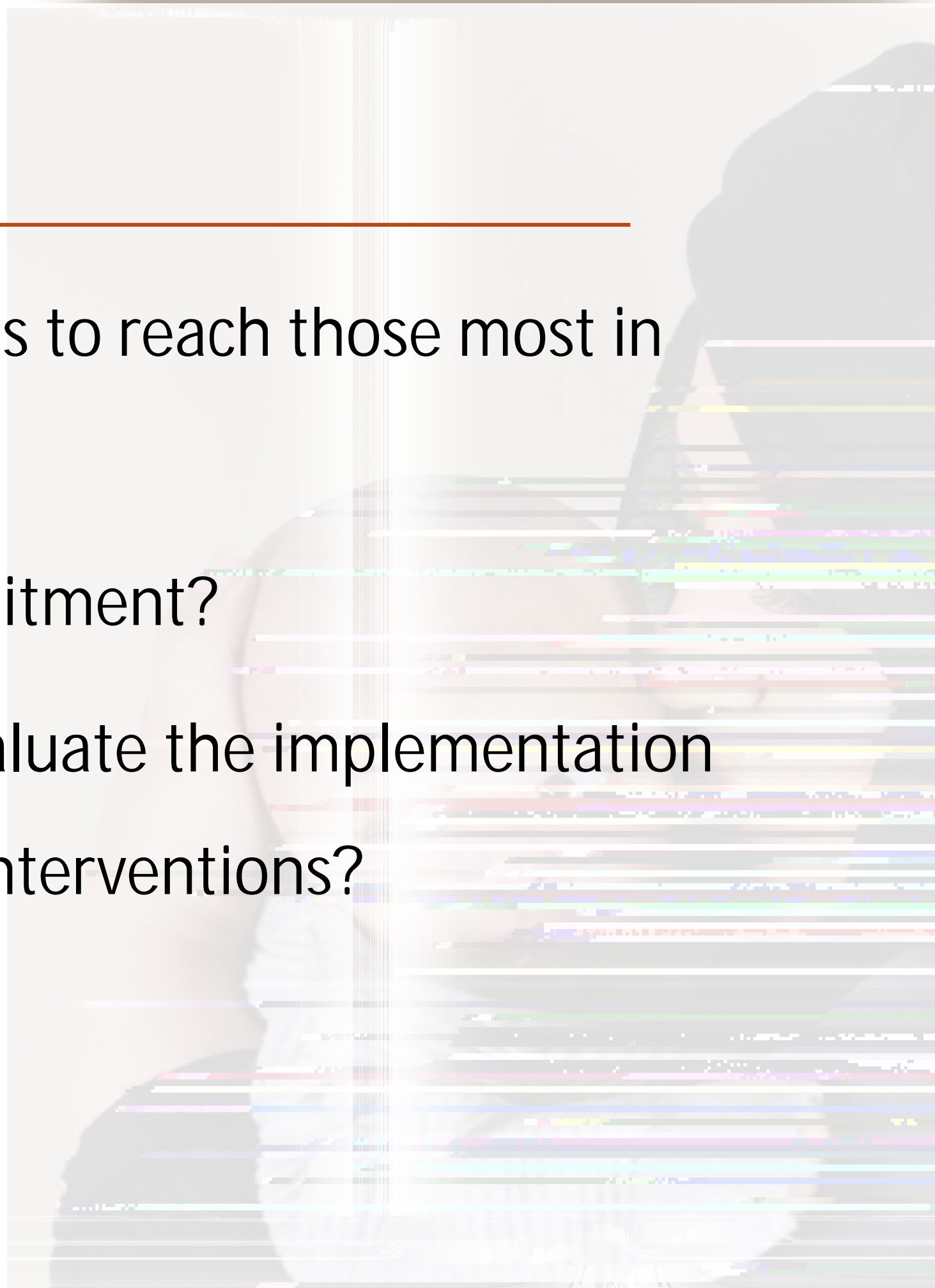
# Challenges

---

How to design services to reach those most in need?

How to improve recruitment?

How to effectively evaluate the implementation and effectiveness of interventions?

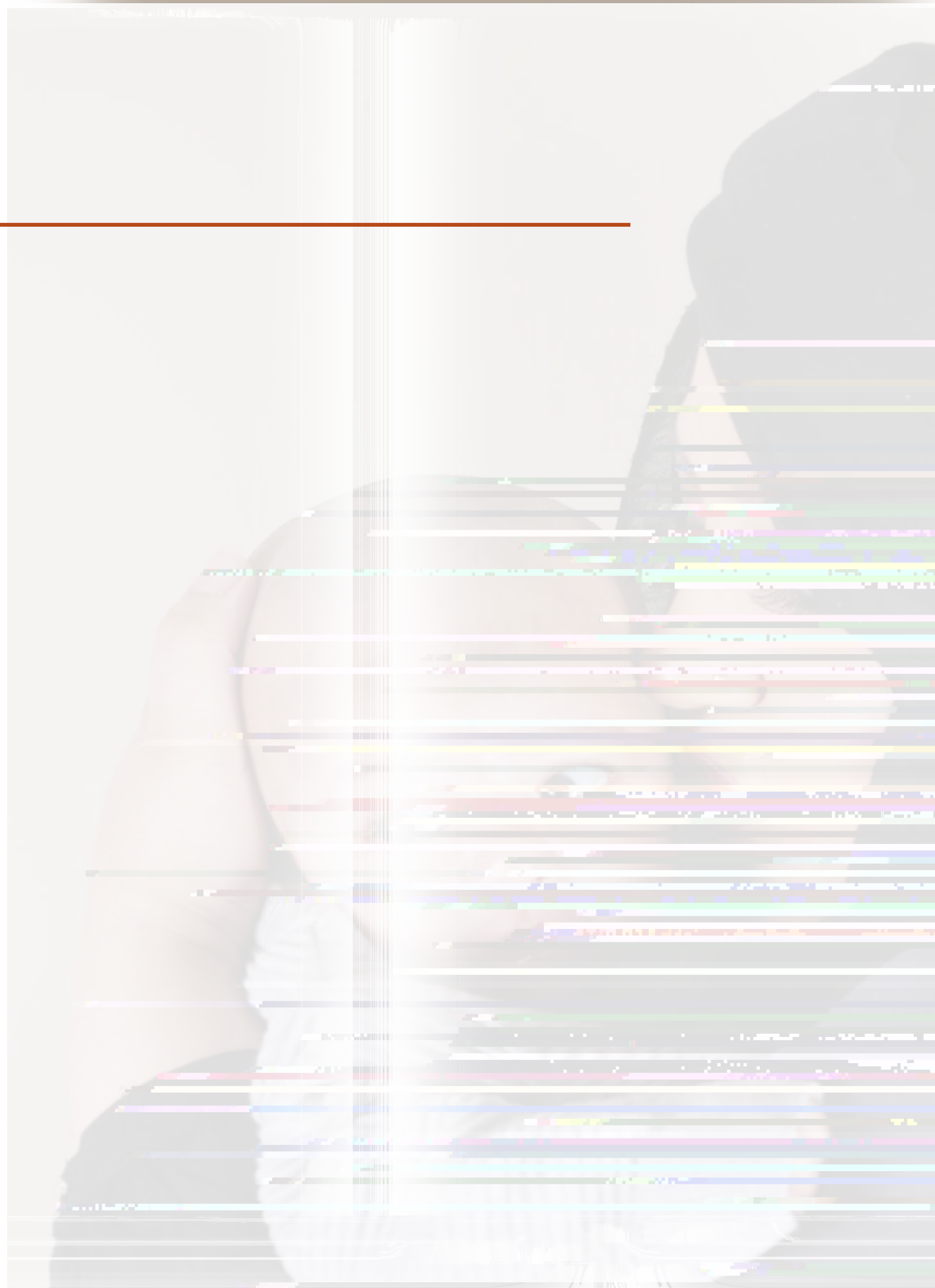




# References

---

1. Wickham S, Anwar E, Barr B, Law C, Taylor-



# References

---

14. Allmark P, Salway S, Crisp R, R B. Ethnic minority customers of the Pension, Disability and Carers Service: an evidence synthesis. London: Department for Work and Pensions, 2010.
- 15.

