

Gnj 'bjkl f]o 'Zmā f\_\$Gf] 'HggdKlj]]I\$gh]fk'ā 'Ymme f'  
 \*((\*\$'gōōo]\`Zq'gmj'E Yjk`\_YI] 'Zmā f\_'T'] 'gōōō f\_'  
 ]\m[Ylāgf \$j]k]Yj[`\`Yf\`]fI]j]hjk] 'gjl`]'`ōgf\_%]je `Z]f]P]' o adk]] 'mh'lg'; \$( ( ( klm\]fikYf\`\*. ( Y[\Y]e ā `kIY `ōā f\_\$

Yf\`ā 'T'] 'm'nj] &< k[ āā f]k'o āā hYq'j]ge 'jgZglā k\$Y]lāp[ā'd  
 ā]l]ā]f[]]m'jZyf āe \$Yf\`]f\_ā]]jā\_'lg'l'] 'ogjā`ā`'bjkl'

nākgjk'h]j'q]Yj\$[j]YI] '\*\$( ( ( lōZk'Yf\`\_]f]j]YI] 'Yf`]klāe YI]Y\`

\*( )1'\*( Y[\Y]e ā `q]Yj\$M`DKIY]l%h'kYI]jY[I]Y\`E, ,e`g^  
 ]pl]jfYdāfn]kle ]fI'Yf\`]e hōq]\`e g]]l`Yf`)\$ (( 'h]ghd`&ā`  
 Y\`āāgf\$, , f]o`M`D\_]Y\`mYI] kIY]l%h'k'o]]j]]`gje ]\`n]ā`\_`  
 \*(('\*)&Kā[]`\*( ), 'Ylg]Ydg^^-O'kIY]l%h'k'ā`Zmā f]kk`'Yn]'  
 [gōō[]lān]ōj]Yk]\`gn]j`E), 1'e āāgf`ā`ā`fn]kle ]fIk&

[UCL East](#)

[East Bank](#)



9k; gnà%1lgc` gd\$gmj`f\_Y\_]e ]fl`l]Ye k'oYfI]\`lg`

e gkl`mj\_]fl`[`Ydf\_]kY ] [l`f`\_h]ghd`Yf`\`l` ]`h`df]l&Brkl`

æ hY[l\$Yf`k`gok` go`o]`gmf`\`f]o\$B]pāđ`oYqk`lg`\]đ]j`  
hjgđ [l`k`f`l` ]`Gđe hā`Zgjgm`k`\]khā]`; gnà%1&

ā]flā]\`l` ]`gđgođ`\_h]ajāqY]Yk`gj`Y[lāf`gf`[`Ydf\_]k`  
Y[ ]\`Zq]Ykl`Dgf`\gf]jk`mjā`\_\*(`\*)2



Images opposite from top:  
Aerial view of Queen Elizabeth Olympic Park and surrounds, credit © Jason Hawkes  
Workshop, credit Matt Clayton for UCL  
STEM skills workshop, credit UCL Engineering

Images this page from top:  
Rubberna Webb, Trellis project co-creator, credit Ollie Harrop  
In the garden, credit Ondre Roach  
Engineering Tutoring Programme, credit UCL Engineering  
Get Together participants, credit LLDC

---

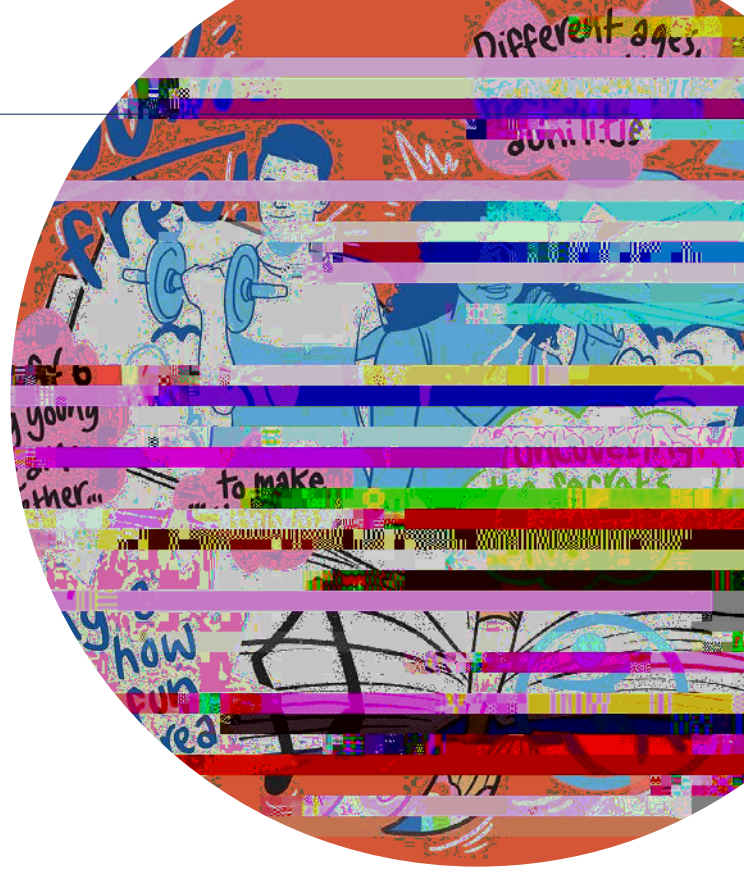
Social connections are crucial for our health and well-being, especially during times of high uncertainty and distress. We collaborated with local partners to better understand the impact of the pandemic on the health and wellbeing of our local communities and explore the role social connections play in building resilience.

=Ykl`Dgf\gfr`Yk'e Yfq'k] d%e hggj\`Yf\`kgd`%jY\]j`Yjlk'`

---

---

---



We tried to incorporate everyone's local knowledge into our map to make it as diverse and interesting and jam-packed with information as possible.

---

Youssef

; g%j] Ylgj 'g^l' ] 'F] o` Ye 'Qgni` 'E Yh

L` ]j] @'klm `Yjgrf\`l` ] '[gjf]j` from my house that I never even knew was there! That's why the map's a great resource.

---

Tekai

; g%j] Ylgj 'g^l' ] 'F] o` Ye 'Qgni` 'E Yh

Lack of opportunity can often come from a lack of knowledge of what might be available to you... Initiatives such as this can go a long way to increasing accessibility for young people in Newham.







*Images from top:  
Skate dot model, skateboarding workshop*

---

---

It's great because I can feel the line clearly, I can also walk faster. They should have lines like this everywhere, in parks, in the middle of the train platform so blind people can easily navigate.

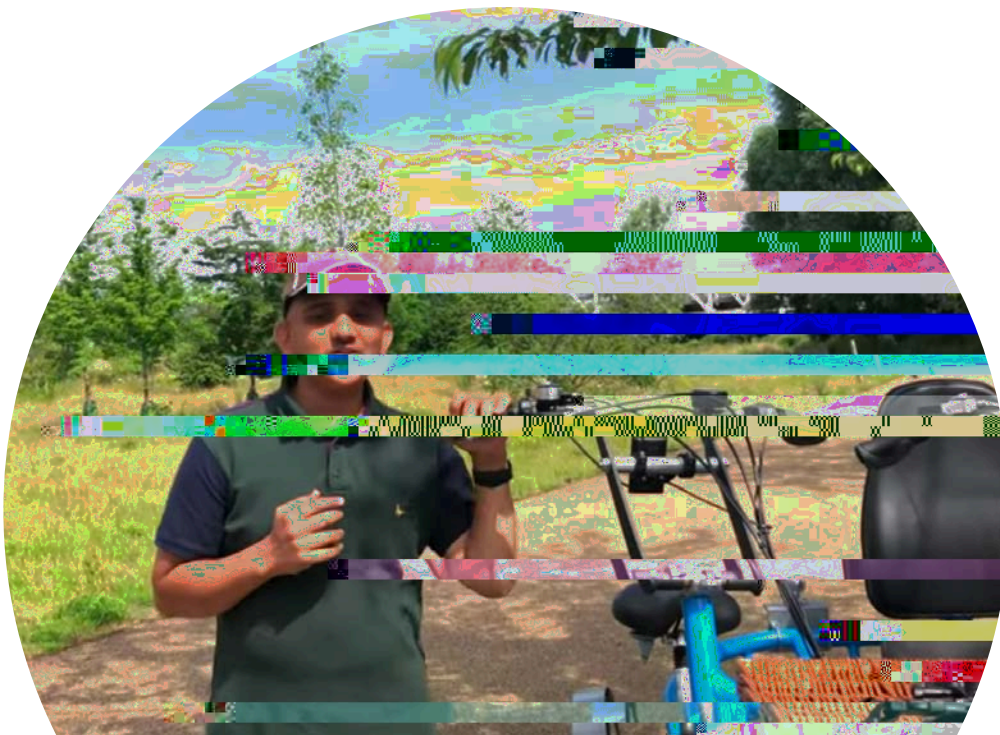
---

Hasmukh

The voice and lived experience of disabled people has driven changes to the built environment and supported a change in culture. The two go hand in hand to create spaces that foster creativity and innovation while removing the barriers that disable.

---

Kamran Mallick



---

Log 'g^l` ] 'Za\_ [ ` Yd f\_] k^Y[ f\_] Ykl 'Dgf \gf 'Ye ad k \mj f\_ ; gnà %1' have been home schooling and remote learning. Together with local education partners, UCL East's schools engagement team adapted ak'gmj] Y[ ` hdfk'lg'Pl' ] 'f]] \k'g^] Ykl 'Dgf \gf 'qgmf\_ 'h] ghq \$l` ] q' families, and teachers. As a result, UCL East worked with 28 east



## CASE STUDY

# East Summer School & East Autumn School workshops

Main project partners:

M D'Arkla'mi 'g^E Ycaf\_%KYjY 'O at]kYf\KYjY: jgmr[]j  
Dgf\gf'D]\_Y[q<n] d]he ] fI'; gjhgjYlajf 'DD<; !%LYkfæ 'Ka\á Y9e á

Location:

L' ] 'Arkla'mi 'g^E Ycaf\_á Y'e mda ak[ ahdfYjqj]k]Yj[ ' [ahZ'gj'gk] 'af]j]k] \ 'á  
l' ] 'e Y\ 'o gjd.2e Yc]jk'g^e gd [m]k'lg'e Yc]jk'g^Zmá á\_k\$kgmh'lg\áe gf\ks

hnZá 'á'á ná\ 'lg] phd]j ] ' 'á'ckZ] lo]] f Y[Y\ e á ]j]k]Yj[ ' Yf\ ' Yf\k'gf  
]ph]jáf [ ] \$Yf\ [ ] d Z]Y] ] ' k ]j 'áq'g^klm &

>jge \*( \*(\$l' ] 'Arkla'mi 'g^E Ycaf\_ 'hjn\ n]] \ Yf] o 'hjn]Ye e ] 'g^ n] fIk  
'gj'qgrf\_ 'h] ghá \$krnhgj] \ Zq'l' ] ' E Ycaf\_ 'KhY[ ] k]j]k]Yj[ ' 'hjn] [I\$'nf\ \

<]n] d]he ] fI'; gjhgjYlajf 'DD<; !'gj'á k'Kre e ]j Yf\ '9mre f 'K[ 'ggá&

L' ] 'ogjck' ghk\$áY] 'á ] 'd'gfá'f' \n] 'lg; GNA-%1j] kljáf l'ajfk\$oj] 'gh] f'  
lg] \*%, Yf\ )-á) O%q] Yj%á k'á]ge '@Y[cf] q\$F] o' Ye \$Lgo ]j '@Ye d]k Yf\ '  
OYd' Ye '>gj] kl\$Yf\ 'o]] ] [g%] ka\_f] \ 'o á' Ykl]]jáf \_]jgmh'g^qgrf\_ 'h] ghá &

Yf\ 'nf\ ]jkiYf\ 'e gj] YZgm'l' ] ' ] Yd' Yf\ ] f'ná gfe ] f]YdZ] f] Pk'g^] nkYZd'  
n]jknk\á hkgYZd' e Ykck&L' ] 'hghmáYj; nklge ák] 'Qgnj'Gof '>Y[ ] 'E Ykck'gfá'f'  
o gjck' gh'o Yk'l' ] f ] Ym\_ ] 'ZqLgl] f' Ye %Yk\ \ ] plá] k\ \ ka\_f]j'j ] Z] [cY'  
C]e á9hYjY&

F ] Yj] (( 'hY]láf áhYfIk YII] f\ \ ] ' ] 'Arkla'mi 'g^E Ycaf\_ 'ogjck' ghk'á'g' ] ' ] 'Ykl'  
Kre e ]j 'K[ 'ggáYf\ ] ' ] 'Ykl' '9mre f 'K[ 'ggá&á'á'ogjck' ghk'áY[ ] %g%Y[ ] Yf\ '  
gfá'f' ] o]] ] YI] \ Yk'á p[ ] d] f] á'á ] j]q' \_gg\á Zq/1á 'g^hY]láf áhYfIk&

[Find out more](#)

“

I really enjoyed hearing about the  
\a ]j] fI [Yj] ]j 'hYI' k'l' YI [gmd'  
Z] 'lYc] f' á' \] ka\_f ] ] ' 'á Uj] Yd]j  
inspired me and I liked how they  
answered my question which  
o Yk' go \g'l' ] q'á'f\ 'e glánYlajf'  
to do things, I really lack having  
motivation and the answers  
' ] d] \ 'e ] 'lg'ljq'a ]j] f ] o Yqk'g^  
motivation.

14 year old attendee  
á'f'gf'q'e grk'á] \ZY[c]

“

I really enjoyed today's workshop.  
It revived my love for embroidery  
again and now I am addicted to  
sewing! I want to customise more  
face masks for my family and  
friends, and the face masks you  
sent to me were perfect.

Grace L, aged 15

“

This was so therapeutic! I can't  
wait to experiment with this with  
the other mask.

Grace R, aged 15

---

Main project partners:

M D=f\_đ]]jđ\_%<j'=đđYE Ycjq\_đff aE : =  
: 9<M; ge e nfaq; A %F YfY: Y\m

Location:

---

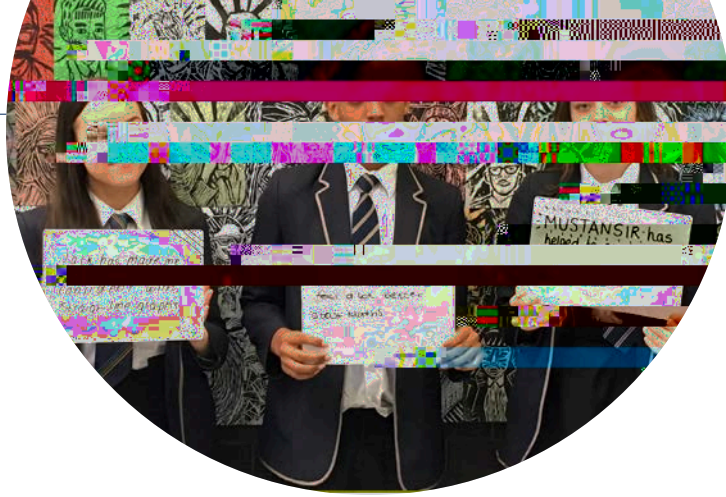
L` ] ; gñà% 1'hYf\] e đ'hjgnà]\`Y`jYe Ylđ`j] e đ\]j`g^l` ] Y[[ ]đjYlđ\_`

“

The tuition has been extremely useful. It helped me become more motivated as it forced me to get back into the ßgo`g^`gđ\_`o gj`c`gf`Y`Yat`ZYk& Since I started the tuition, the idea of me returning back to school has become less daunting because I am now in a position where I feel as though I can pass my mini exams with a good grade..

---

Year 13 pupil



“

I oversee all KS4 interventions, and I can say that this intervention is by far the most rewarding for all involved. The tutors inspire our pupils to aim higher. Through the personalisation of learning, every student leaves the sessions feeling they can tackle the exam questions independently. They always look forward to their tutoring and that speaks volumes. I wish we had more!

---

Danielle Osman

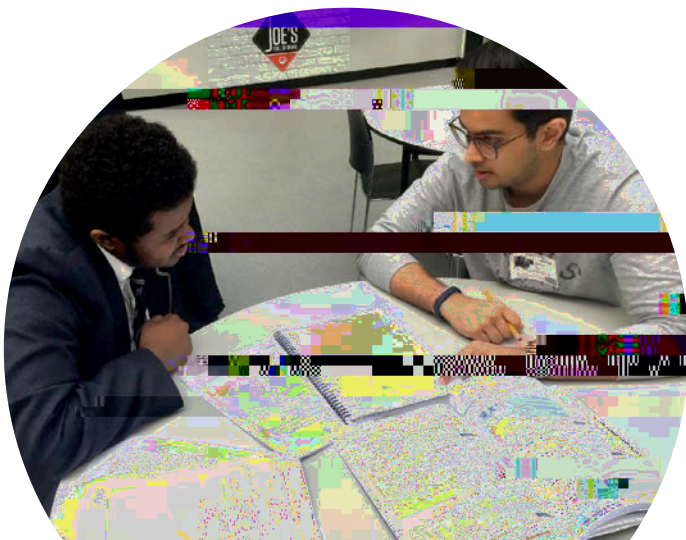


“

The best thing about being a tutor is the bonding and social experience. It is a breath of fresh air to meet the tutees every week, and their zeal to learn and excel inspires me to put in the effort and exams. It is, by far, a principle driving force for motivation for me as I get to help my tutees and also help myself along the way.

---

Zarin Haque



Cultural engagement is at the heart of UCL East’s relationship with east London. Aligning the work of community engagement and public art, we aim to create meaningful, creative and impactful collaborations. Through unprecedented times, UCL East’s engagement has continued providing funding, opportunities, and networks to connect UCL East teams with east London communities and support their art and creativity.

j] kne ] \ 'gf 'Y'ke Yd] j' k[Yd] 'f'\*(\*) 'Y1] j'Z] 'f'\_[Yf[]] d] \ '1' ]'

9d' gm\_` `` ] Yn d] Y ] [I] \ Zq' ] ' hYf \ ] e ' \$ ] ' ] Lj] d] k] h] g] b] [Ik' ]  
[ge e k] k] g] f] \ ' ' g] j] p' ' z] a] g] f] ' f' ' E Yj [ ' ' \*(\*) ' Y [ ' ' a] n] \ ' ] ] YI'

f' kh] ] \ Zq' n] k] f' \_ + % ' h] j] f] ] \ ] ] h d] [ Y Yj ] ] Y [ Ik' ] ' g] e ' M D] ]  
H] ] j] a] ' E n] k] n] e ' ] g] ] f' \_ Y\_ ] ' h] j] a] e Yj q' k [ ' ' g] g] d] h] n] h] a] k] \$ f' ' Y' h] j] g] b] [ I'

; gn] a] % ] j] ] k] l] j] a] ] l] a] g] f' k' e ] Yf ] I ] ' YI ] ' ] ' h' ' q] k] a] Yd] p' ' z] a] g] f' [ gn] d] ]

Trellis Festival projects:

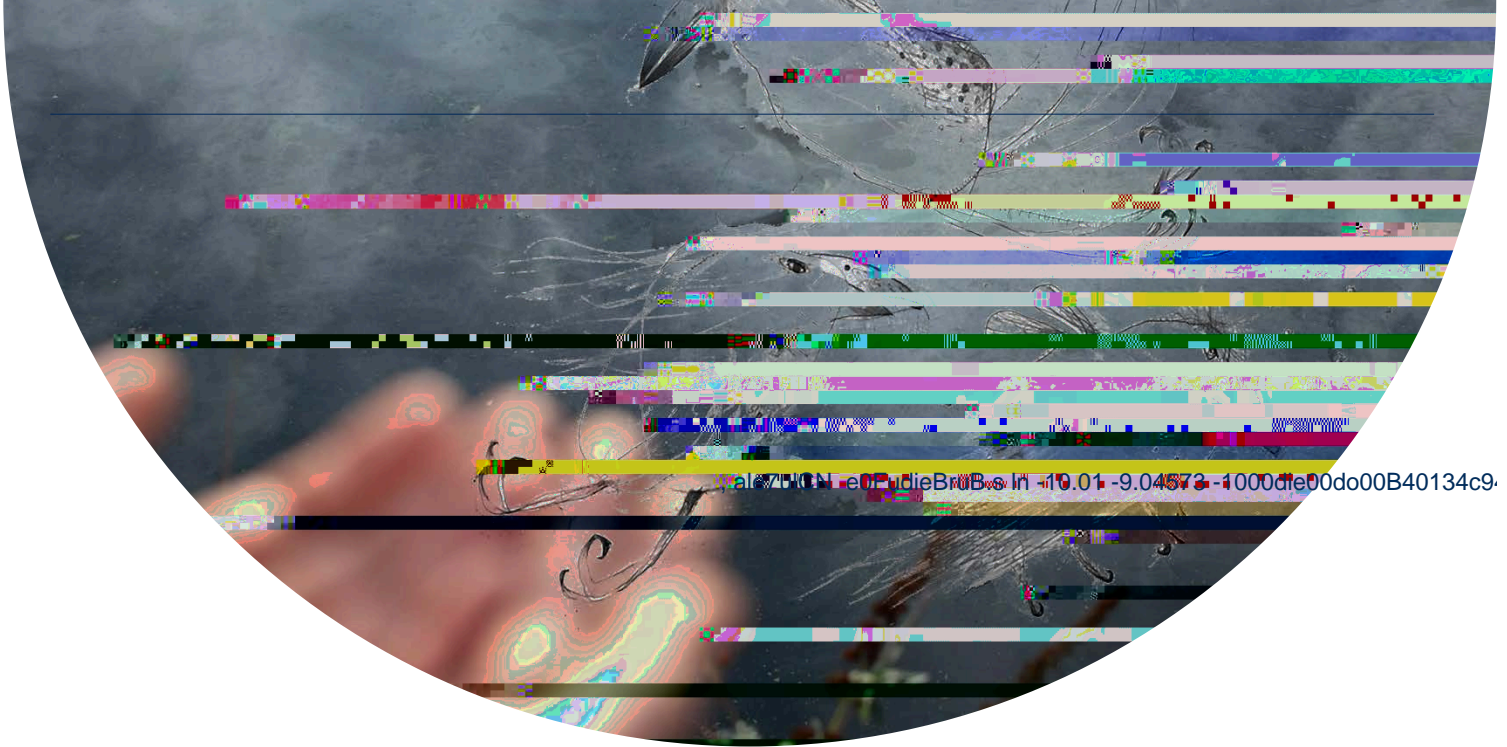
- \_\_\_\_\_
- \_\_\_\_\_
- \_\_\_\_\_
- \_\_\_\_\_
- \_\_\_\_\_

[ge e n] f' a] q' \_ j] g] n] h] k] \$ ] ] k] a] ] f] i] k] ' Yf \ ' q] g] n] f' \_ ' h] ] g] h] d] [ g] % ] n] j] YI ] \ ' Y'  
n] a] ] n] Yd] ] Y d] q] ] p] h] ] j] a] ] f] [ ] ' o] a] ' ' Y' g] [ Yd] p] e ' [ ge h] Yf q] \$ = ) / ' p] e ' k] k' ]  
L' ] ' p] f' Yd \_ a \_ ' o] Yk' k' ' gof ] g] j] ] k] a] ] f] i] k] \$ Yf \ ' ' n] j] ] ] j' [ g] % ] j] ] Yl] a] g] f' k'

“

Lg\_ ] I' ] ] j] \$ ] I' ] ] k] ] ' Pn] ] ' h] j] g] b] ] [ Ik' ] ' Yn] ] '  
resulted in a multitude of artistic outputs – walks and workshops, p] e ' k] \$ \ ] j] Y o f' \_ k] \$ h' ' g] l] g \_ j] Y h' ' q] \$ Y f' ] '  
artist’s book – as well as multiple legacies that may or may not Z] ] \ ] p] f] ] \ ' Yk' ' Yj ] I] \$ f' [ d] h] \ f' \_ ' f' ] o' ] '  
relationships, new knowledge and understanding, new ways of working together and, more tangibly perhaps, tree cuttings that will soon be planted in the grounds of UCL East.

h] j] gn] a] ] ' Y' Z] d] h] ] h] j] a] ] I' ' ' g] j] ] f' \_ Y\_ f' \_ ' o] a] ' ' h] Yj ] I] f] ] j] k] \$ f' [ d] h] \ f' \_ ' k] I] Yj ] I] %



aleZBICN-e0PudieBrüBos In -10.01-9.04873-1000die00do00B40134c9

Main project partners:

?]gj\_ä'HYnøhgm %ú A

¶ ® ay ~ ; YT h A A A a a Ú °

“

It's been a total joy, it's been so validating for me to be part of that safe space, to be encouraged to think, maybe, I do have something to share... It's like a seed has been planted that makes me want to carry on doing this kind of thing.

---

Caroline Oliver  
; g%j] Ylgj

“

This project has helped me to see me, and to see where those preconceptions of autistic people which others hold have intersected with defending authenticity. True participation is not a token gesture but a gift.

---

Jon Adams

Images from top:  
Through your eyes, credit Briony Campbell for  
FlowUnlocked; 'Bag save number 3745' by Jon Adams,  
which features on the cover of this report



---

Main project partners:

M D Aklam] g^Gh` I` Yø gg\_q%<j`=e adHYII]jkgf`  
M DKd\` K[` ggđ B A`

“

I liked the questions the programme raised about perception/memory/biology and how an individual can experience 'reality' through a e m d h d [ d q ' g ^ P d ] j k ' É h g f l f \_ ' l g ' a uniqueness and the absurdity of standardisation.

---

Participant  
žf gf qe gmk`ŕ] \ZY[c!



*Images this page:*

---

This was more than just a pleasant surprise for us: it underlined the lasting value of providing accessible, community-led money support to Diverse Ethnic Communities.

---

Suzy Kirby

E gf]q'9#=-





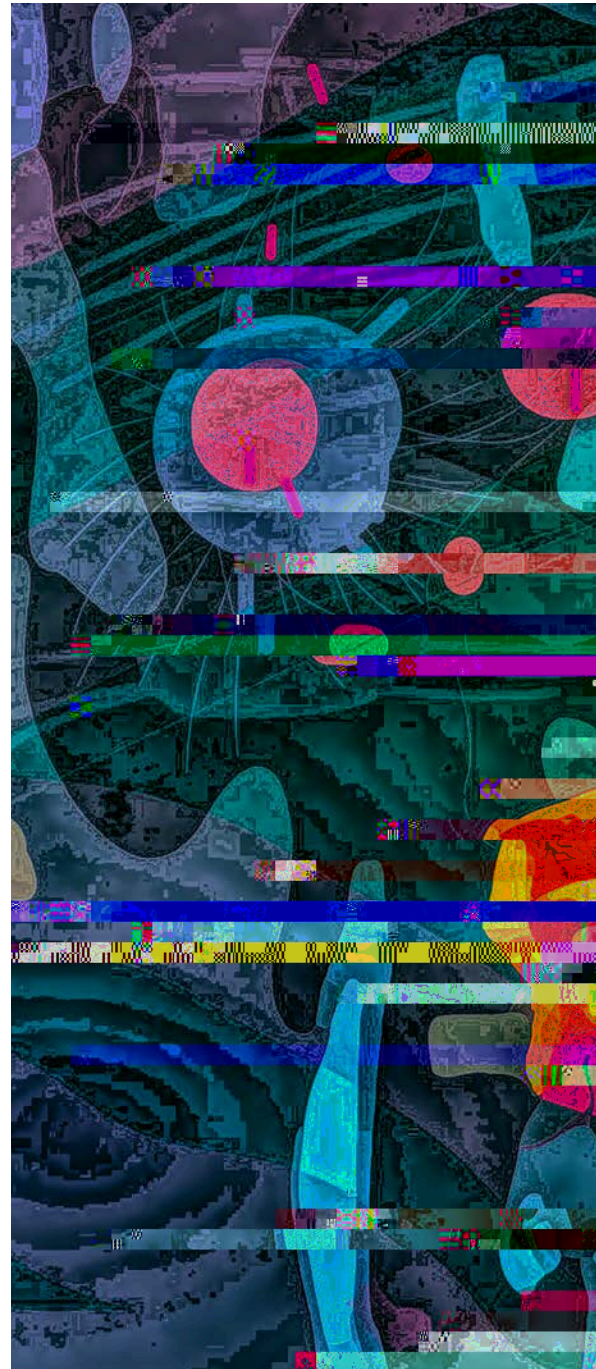
For everyone listed here and many others, our thanks for your engagement with UCL East. We look forward to continuing to work with you in 2022 and beyond.

9F]o'<aj][lqf

We were kept involved and consulted on everything and had a lot of input into how we wanted to be represented - what ideas we liked and didn't like. Everyone was equally important; our opinions were all valued.

---

Ben Wheeler  
; g%j] Ylgj\$>@o 'Mf@ [c] \ \$



ucl-east@ucl.ac.uk  
(\* ( / . / 1 \* , - + )  
[www.ucl.ac.uk/ucl-east](http://www.ucl.ac.uk/ucl-east)

 @UCLEast